

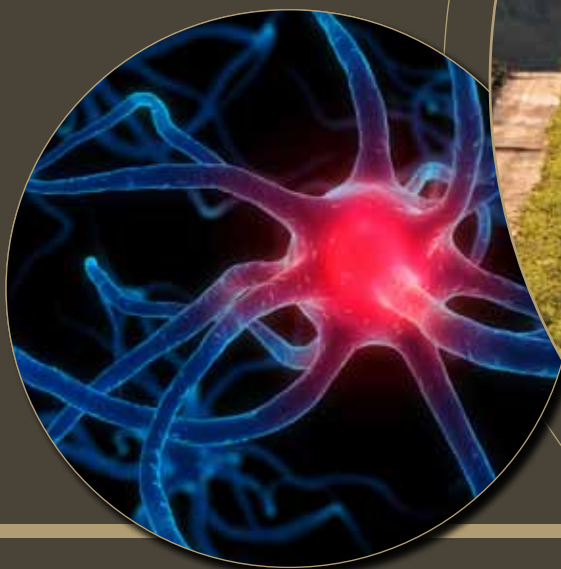
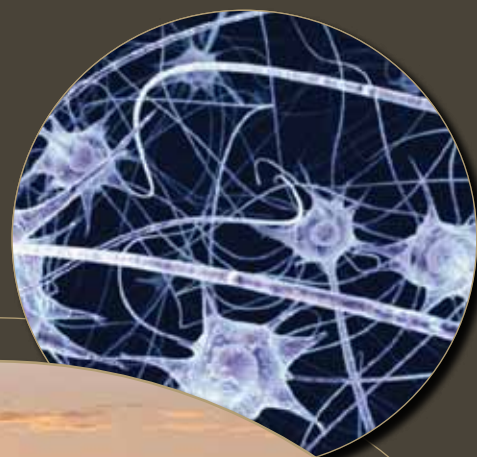
The 17th Napa Pain Conference

2010 SUPPORT OPPORTUNITIES

August 13th–15th, 2010

Meritage Conference Center

Napa, California



The 17th Napa Pain Conference

August 13th – 15th, 2010 • Meritage Conference Center • Napa, California

The Napa Pain Institute and HealthRoots are pleased to present the 17th Napa Pain Conference. Over 200 healthcare providers are expected to attend this year's conference to share and explore the latest clinical evidence, publications, best practices and industry developments. Your support is important to continuing research and education efforts in the field of pain medicine.

EDUCATIONAL GRANTS

We invite you to become a supporter of the 17th Napa Pain Conference. Commercial support of the 17th Napa Pain Conference offers increased visibility to your key audiences. Your grants will raise awareness of your organization while supporting education and research in pain medicine.

DIAMOND LEVEL - \$30,000

- Recognition in Program Book
- Recognition in Daily Agenda
- Recognition on Napa Pain Conference Website
- Commercial Support Ribbon for Representatives
- Full Page Color Ad in Program Book
- Your company will receive a copy of the preregistration list
- Reserved Table for 8 at Celebration Dinner
- Hotel Suite for Company Hospitality Functions for Friday and Saturday

PLATINUM LEVEL - \$20,000

- Recognition in Program Book
- Recognition in Daily Agenda
- Recognition on Napa Pain Conference Website
- Commercial Support Ribbon for Representatives
- Full Page Black and White Ad in Program Book
- Your company will receive a copy of the preregistration list
- Complimentary Hotel Room for Friday and Saturday

GOLD LEVEL - \$10,000

- Recognition in Program Book
- Recognition in Daily Agenda
- Recognition on Napa Pain Conference Website
- Commercial Support Ribbon for Representatives

A poster in recognition of your commercial support will be displayed throughout the 17th Napa Pain Conference.

To award an unrestricted educational grant please contact info@napapainconference.com.

All events, dinners and seminars must be reviewed and approved by the Napa Pain Conference board. No ancillary events are allowed to compete with the conference agenda.

Scientific Posters - Deadline is July 16. Submit via e-mail to research@napapaininstitute.com.



2010 SUPPORT OPPORTUNITIES

► **NAPA PAIN CONFERENCE PROGRAM GUIDE** \$2,500

This exclusive opportunity offers concentrated exposure to an audience of pain clinicians interested in products and services related to pain management. The supporting organization will be featured in a full-page full-color advertisement placed on the inside front cover, back cover and an interior page.

Our program guide contains the complete listing of events, exhibit activities, and attendees will refer to it often throughout the conference. Delivered via the web and on-site upon check-in, the program guide will successfully reach more than 200 participants as they navigate the day to day agenda.

In addition, this publication will be available on our website as a downloadable PDF after the event.

Take advantage of this opportunity to put your message in the spotlight.

► **SYMPOSIA**

• **BREAKFAST/LUNCH SYMPOSIA** Breakfast \$10,000 | Lunch \$20,000

DATE:

Breakfast Symposia (3 available):	August 13 & 14	7:00 am – 8:30 am
	August 15	6:30 am – 8:00 am

Lunch Symposia (2 available):	August 14	12:00 pm – 1:30 pm
	August 15	12:30 pm – 2:00 pm

LOCATION: TBD

You are invited to provide support for the 17th Annual Meeting through your support of a non-CME presentation. This opportunity will be awarded on a first-come, first-serve basis and all presentation topics must be approved by the conference organizers. The costs to support a symposia are \$10,000 for a breakfast event and \$20,000 for a luncheon. These events are open to all attendees. Pre-registration is required.

This is an excellent opportunity to demonstrate your commitment to education in the field of pain management. Symposia will not exceed 1.5 hours.

**To reserve a support opportunity, please contact
info@napapainconference.com or call 707-252-9656**

The 17th Napa Pain Conference

August 13th – 15th, 2010 • Meritage Conference Center • Napa, California

2010 SUPPORT OPPORTUNITIES

► SYMPOSIA (*continued*)

• CANCER PAIN FORUM

Breakfast \$5,000 | Lunch \$10,000

EVENT SUPPORT INCLUDES:

- Online registration and directional signage
 - Listing on the conference website and in the final program guide
 - Promotional material may be included in conference bag
 - An e-blast to more than 2,000 conference invitees
 - Pre-event and on-site meeting management assistance
 - Food and beverage planning, menu selection and meal costs
-

Faculty expenses are not included: Honoraria, faculty air travel and ground transportation, faculty housing and registration fees. All program content will be developed by the supporting organization. Exact details directly impact final costs.

► PRIVATE ADVISORY BOARD MEETING (5 available)

\$50,000

LOCATION: TBD

DATE: TBD – Pre- or Post-conference

This opportunity provides an exclusive venue for an organization to conduct an intimate advisory board meeting in roundtable format with select members of the esteemed faculty. This event is a valuable opportunity to obtain feedback, advice and information from leaders in the field of pain management.

This opportunity will be awarded on a first-come, first-serve basis and all advisory board topics must be approved by the conference organizers.

FEES INCLUDE:

- Online registration and directional signage
 - Electronic invitation and confirmation assistance
 - Pre-event and on-site meeting management assistance
 - Food and beverage planning, menu selection and meal costs
 - Basic audiovisual package (LCD projector, screen, laser pointer, slide advancer)
 - Meeting materials production assistance (additional cost for printing)
-



► **EXHIBITOR MEET & GREET WINE RECEPTION** **\$2,500**

DATE: Friday, August 13, 2010 5:15 pm – 6:30 pm

This interactive dynamic hour and a half interlude will open within the display area immediately at the conclusion of the day's formal agenda. The exhibit hall will be open for this Exhibitor Meet & Greet. This time has been designated on the first day of our 17th Annual Meeting to allow exhibitors focused time with our registrants. Physicians, along with their staff and families, will be able to enjoy this social time and learn more about your product and/or services.

Prominent signage, banners and an acknowledgement in the program guide. will be included.

► **PRODUCT THEATER** **\$8,000**

LOCATION: Exhibit Hall

DATE: Saturday, August 14, 2010 3:15 pm – 3:45 pm

A half-hour educational program during daytime hours

Located within the Exhibit Hall, this opportunity is available only to confirmed Napa Pain Conference exhibitors.

*Not accredited for CME due to the nature of the content and location of the theatre.

THE SUPPORT COST OF \$8,000 INCLUDES:

- A theatre with classroom seating for 25, a stage, panel table with chairs, basic audio visual package
- Online registration and directional signage
- Listing on the conference website and in the final program guide
- Promotional material may be included in conference bag
- An e-blast to more than 2,000 conference invitees
- A boxed lunch will be provided for up to 25 participants.

The 17th Napa Pain Conference

August 13th – 15th, 2010 • Meritage Conference Center • Napa, California

2010 SUPPORT OPPORTUNITIES

► CIRCLE OF INFLUENCE PRIVATE DINNER \$3,000

This private dinner will offer the opportunity for interaction with two representatives from supporting companies and selected conference faculty (up to 10 people).

DATE: Saturday, August 14, 2010 6:30 pm – 9:30 pm

FEES INCLUDE:

- Electronic invitation and confirmation assistance
- Directional signage
- Pre-event and on-site meeting management assistance
- Food and beverage planning, menu selection and meal costs
- Basic audiovisual package (LCD projector, screen, laser pointer, slide advancer)
- Post-event thank you letter with supporter acknowledgement

► KEYCARDS (HOTEL) - DEADLINE JULY 1 \$1,800

Attendees will see your message every time they enter their hotel room! (Only one company may take advantage of this support opportunity).

► BREAKS (4 available) \$1,000

To generate additional recognition during the meeting, provide a break for the day and have your organization's name and logo displayed at the buffet tables.

► CYBER CAFÉ - DEADLINE JULY 1 \$3,000

The cyber café will feature multiple computers and will be conveniently located directly outside the meeting rooms. The cyber café includes prominent recognition with signage.



▶ CONFERENCE LANYARDS – DEADLINE JUNE 1 \$2,000

Let the attendees do the marketing for you! Your company name and logo will be exclusively featured on the conference name badge lanyards.

▶ CONFERENCE BAGS – DEADLINE JUNE 1 \$2,000 PER COMPANY LOGO

Your organization's name and logo will be prominently displayed on each conference tote bag for recognition during the conference and beyond.

▶ ROOM DROP \$500*

Hotel room drops allow your organization to provide extra information directly to all conference attendees staying at the event's official hotel (The Meritage Resort). Materials must be provided by the supporting organization and delivered to the hotel by August 9.

▶ BAG INSERT \$500*

Your informational material/brochure will be included inside the attendee bags. Materials are provided by the supporting organization and must be delivered to the hotel by August 9.

* Available to multiple exhibitors



The Napa Pain Conference supports the HealthRoots Foundation and its mission of providing health care and sponsoring entrepreneurship and community development in the developing world. HealthRoots, founded in 1996 by Dr. Eric Grigsby and his wife Dr. Mary Rocca, is currently working in Malawi, Central Africa.

HealthRoots was instrumental in the development of the Palliative Care Association of Malawi and continues to lead advocacy efforts to obtain resources for palliative care patients. Support from HealthRoots also led to the development of the first scientific organization for physicians, the Society of Medical Doctors of Malawi.

Proceeds from the 17th Napa Pain Conference, in conjunction with WIRED International, will go toward developing an online resource for palliative care in patients with HIV/AIDS and cancer in Malawi. Also, support will go toward establishing a dental clinic at Dae Yang Luke Hospital in the capital city of Lilongwe, Malawi, and continued support of sustainable entrepreneurship.

